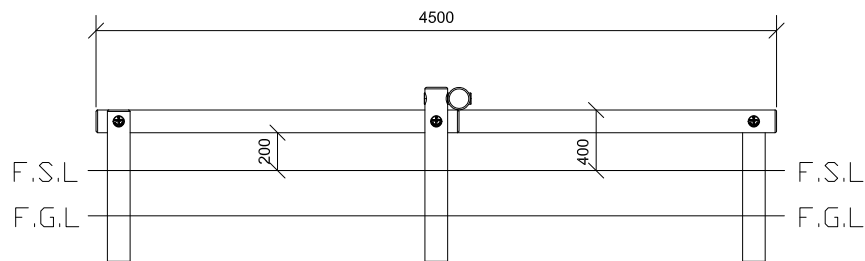


ISOMETRIC VIEW



FRONT ELEVATION

[illegible]

**SPECIFICATIONS:**  
POSTS: NATURAL AUSTRALIAN HARDWOOD  
HARDWARE: STAINLESS STEEL

**MAINTENANCE:**  
CHECK ALL FASTENERS AND RE-TIGHTEN IF NECESSARY 1 WEEK AFTER INSTALLATION. A MAINTENANCE SCHEDULE SHOULD BE ESTABLISHED AND FOLLOWED DEPENDANT ON FREQUENCY OF EQUIPMENT USE.

**APPLICATION:**  
WOODWORX RANGE OF COMMERCIAL PLAYGROUND EQUIPMENT

STANDARD STABLE SOIL CLASS M OR GREATER

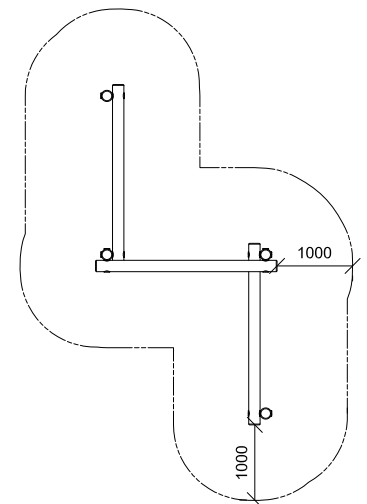
AGE: 5 YEARS & ABOVE

REQUIRED FALLZONE:  
FHOF: 0.60M

### INSTALLATION INSTRUCTIONS:

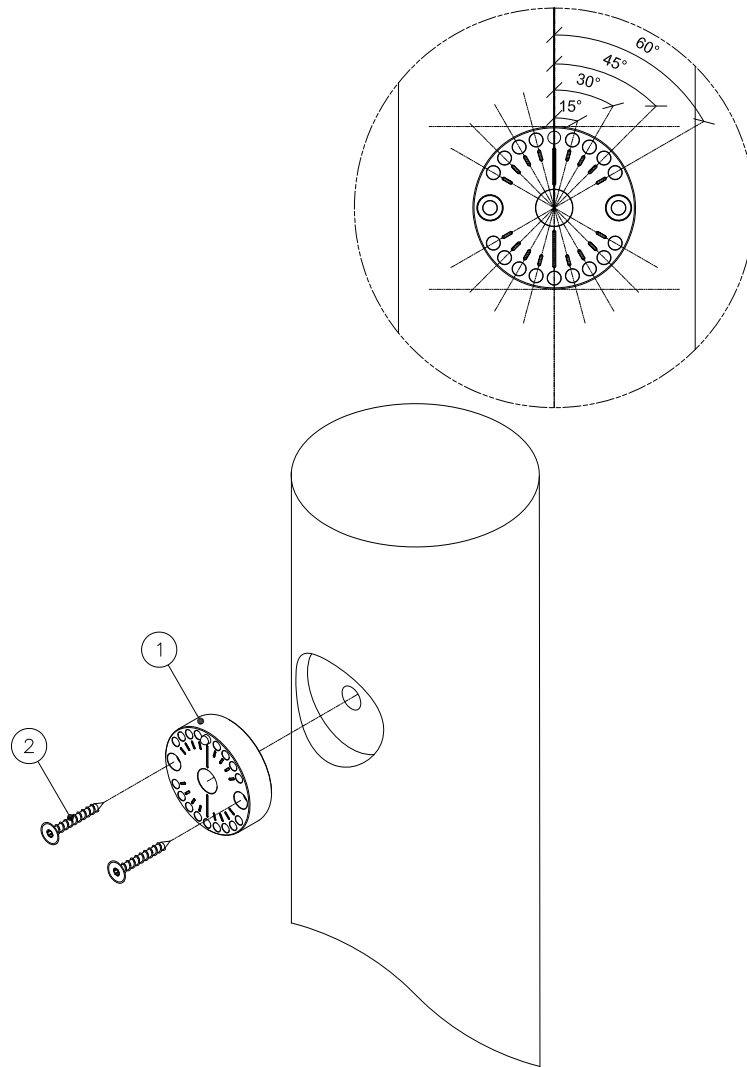
1. READ THIS DOCUMENT THOROUGHLY BEFORE COMMENCING INSTALLATION
2. CHECK ALL ITEMS ABOVE ARE INCLUDED AND UNDAMAGED
3. IF ANY ITEMS ARE MISSING OR DAMAGED IN TRANSIT PLEASE CONTACT IMAGINATION PLAY IMMEDIATELY FOR FURTHER ASSISTANCE.
4. CHECK APPROPRIATE AREA IS AVAILABLE FOR INSTALLATION AS PER DIAGRAM AND MARK OUT ACCORDINGLY INCLUDING FOUNDATION LOCATION.
5. IT IS IMPERATIVE THAT YOU KNOW THE FINISHED SOFTFALL HEIGHT PRIOR TO EXCAVATION OF HOLES.
6. DIG 4X FOUNDATIONS AS PER FOUNDATION DRAWING TYPE A
7. ATTACH AND INSTALL PIVOT ANCHORS (REFER PIVOT ANCHOR ASSEMBLY INSTRUCTIONS).
8. INSTALL COVER CAP ASSEMBLY (REFER COVER CAP ASSEMBLY INSTRUCTIONS).
9. ADDITIONAL SUPPORT MAY BE REQUIRED TO POSTS WHILE CONCRETE CURES. ADD IF NECESSARY BEFORE CONCRETE.
10. WHEN CONCRETE HAS CURED, REMOVE ANY ADDITIONAL SUPPORT IF USED.
11. REMOVE ANY WASTE CONCRETE FROM FINISHED GROUND AREA.
12. PLEASE CHECK ALL HARDWARE AND LEAVE SITE IN A CLEAN & ORDERLY MANNER.

F.S.L > FINISHED SURFACE LEVEL  
F.G.L > FINISHED GROUND LEVEL





## OTH03001 - INDEXED PIVOT ANCHOR ASSEMBLY - STEP 1

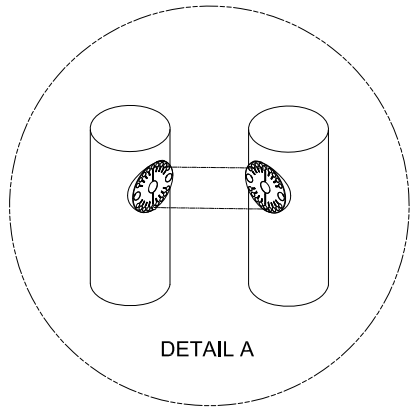


ISOMETRIC

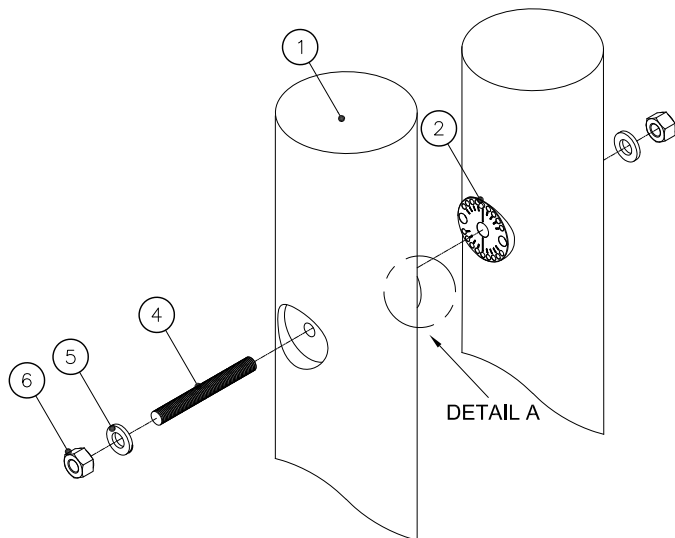
Item	Code	Description	No.	SPECIFICATIONS: POSTS: NATURAL AUSTRALIAN HARDWOOD  HARDWARE: STAINLESS STEEL	
1	OTH03001	INDEXED PIVOT ANCHOR SS (PAIR REQUIRED)	1		
2	FST04010	6 X 70 WIROX CS	2		
APPLICATION: WOODWORX RANGE OF COMMERCIAL PLAYGROUND EQUIPMENT					MAINTENANCE: CHECK ALL FASTENERS AND RE-TIGHTEN IF NECESSARY 1 WEEK AFTER INSTALLATION. A MAINTENANCE SCHEDULE SHOULD BE ESTABLISHED AND FOLLOWED DEPENDANT ON FREQUENCY OF EQUIPMENT USE.
INSTALLATION INSTRUCTIONS: 1. READ THIS DOCUMENT THOROUGHLY BEFORE COMMENCING INSTALLATION 2. CHECK ALL ITEMS ABOVE ARE INCLUDED AND UNDAMAGED 3. IF ANY ITEMS ARE MISSING OR DAMAGED IN TRANSIT PLEASE CONTACT IMAGINATION PLAY IMMEDIATELY FOR FURTHER ASSISTANCE. 4. PLACE PIVOT ANCHOR IN THE AREA PROVIDED ON THE TIMBER POST. 5. ENSURE THAT THE VERTICAL LINES IN THE CENTRE ARE PERPENDICULAR TO THE GROUND AND THE CENTRAL HOLE IN THE PIVOT ANCHOR LINES UP PERFECTLY WITH THE HOLE PROVIDED IN THE TIMBER. 6. SECURE THE PIVOT ANCHOR USING SUPPLIED HARDWARE.					



## OTH03001 - INDEXED PIVOT ANCHOR ASSEMBLY - STEP 2



DETAIL A



ISOMETRIC

Item	Code	Description	No.	SPECIFICATIONS: POSTS: NATURAL AUSTRALIAN HARDWOOD  HARDWARE: STAINLESS STEEL
1	OTH03001	INDEXED PIVOT ANCHOR SS (2 REQUIRED)	2	
2	FST03078	M16 x 1000MM THREADED ROD	1	
3	FST03082	M16 SPLIT WASHER (SS)	2	
4	FST03080	M16 STANDARD HEX NUT (SS)	2	
5	FST04010	6 X 70 WIROX CS	4	

**APPLICATION:**  
WOODWORX RANGE OF COMMERCIAL PLAYGROUND EQUIPMENT

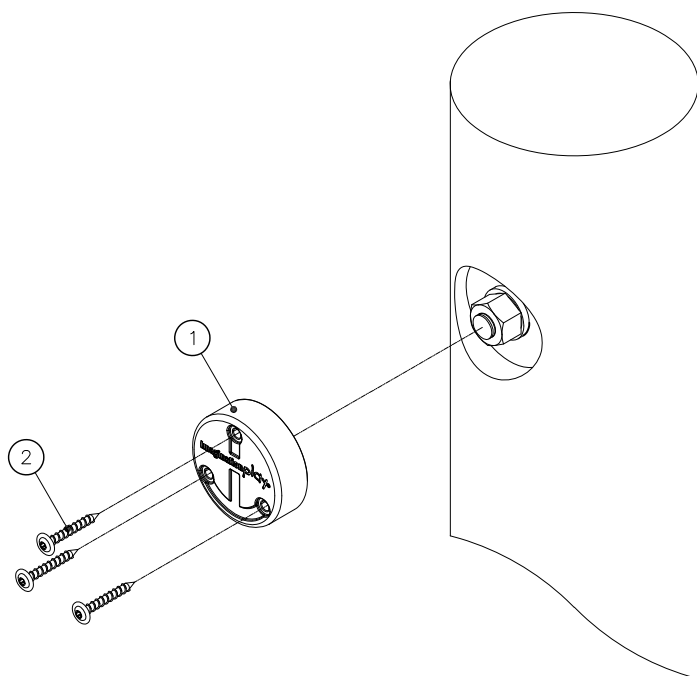
**MAINTENANCE:**  
CHECK ALL FASTENERS AND RE-TIGHTEN IF NECESSARY 1 WEEK AFTER INSTALLATION. A MAINTENANCE SCHEDULE SHOULD BE ESTABLISHED AND FOLLOWED DEPENDANT ON FREQUENCY OF EQUIPMENT USE.

### INSTALLATION INSTRUCTIONS:

1. READ THIS DOCUMENT THOROUGHLY BEFORE COMMENCING INSTALLATION
2. CHECK ALL ITEMS ABOVE ARE INCLUDED AND UNDAMAGED
3. IF ANY ITEMS ARE MISSING OR DAMAGED IN TRANSIT PLEASE CONTACT IMAGINATION PLAY IMMEDIATELY FOR FURTHER ASSISTANCE.
4. ENSURE THAT INDEXED PIVOT ANCHOR PINS ARE OPPOSED, I.E. THE PIN ON EACH ANCHOR ENTERS A HOLE ON THE OTHER ANCHOR.
5. UPON CHECKING THE PIVOT ANCHORS LINE UP, BRING THE TWO TIMBER POSTS TOGETHER, ENSURING THAT THE PIVOT ANCHORS ARE SECURED & INNER FACES ARE FLUSH WITH ONE ANOTHER.
6. PASS THE THREADED ROD THROUGH THE HOLE.
7. USE WASHER AND NUT TO FASTEN AND SECURE THE TIMBER PARTS TOGETHER (FASTEN BOTH SIDES).
8. TIGHTEN THE NUT TILL TIMBERS ARE SECURE, CUT ANY ADDITIONAL LENGTH OF THREADED ROD UP TO THE NUT (CHECK IP CAP SUB-ASSEMBLY FOR DETAILS).



## CAP00001 - IP COVER CAP ASSEMBLY



ISOMETRIC

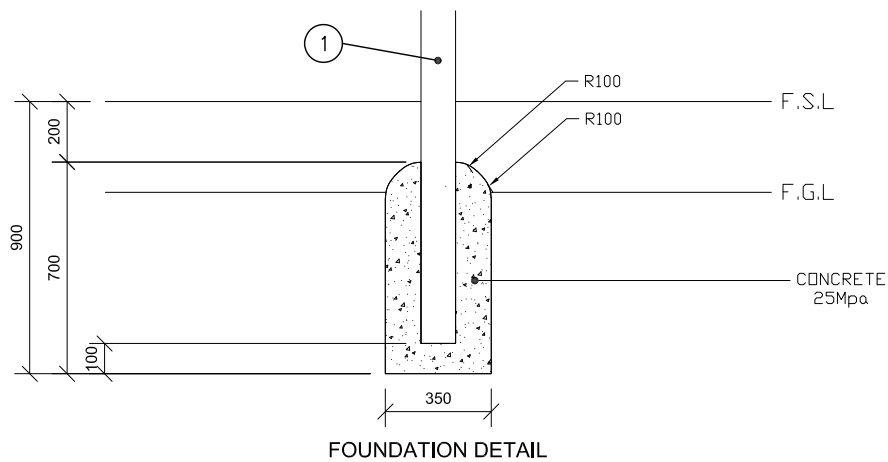
Item	Code	Description	No.	SPECIFICATIONS: POSTS: NATURAL AUSTRALIAN HARDWOOD  HARDWARE: STAINLESS STEEL
1	CAP00001	IP COVER CAP NATURE PLAY (SS)	1	
2	FST04010	6 X 70 WIROX CS	3	

**APPLICATION:**  
WOODWORX RANGE OF COMMERCIAL PLAYGROUND EQUIPMENT

**MAINTENANCE:**  
CHECK ALL FASTENERS AND RE-TIGHTEN IF NECESSARY 1 WEEK AFTER INSTALLATION. A MAINTENANCE SCHEDULE SHOULD BE ESTABLISHED AND FOLLOWED DEPENDANT ON FREQUENCY OF EQUIPMENT USE.

### INSTALLATION INSTRUCTIONS:

1. READ THIS DOCUMENT THOROUGHLY BEFORE COMMENCING INSTALLATION
2. CHECK ALL ITEMS ABOVE ARE INCLUDED AND UNDAMAGED
3. IF ANY ITEMS ARE MISSING OR DAMAGED IN TRANSIT PLEASE CONTACT IMAGINATION PLAY IMMEDIATELY FOR FURTHER ASSISTANCE.
4. ENSURE THAT THE THREADED ROD HAS BEEN CUT UPTO THE NUT AS ILLUSTRATED BEFORE PUTTING ON AND SECURING THE CAP.
5. PLACE STAINLESS STEEL CAP OVER THE NUT ENSURING THE THE NAME (IMAGINATION PLAY ) APPEARS PARALLEL TO THE GROUND AND INSTALL USING SUPPLIED HARDWARE.



Technical drawing showing a cross-section of a concrete slab with a vertical reinforcement bar (labeled 1). The drawing includes dimensions and material specifications:

- Vertical dimension: 900 (Total height of the concrete slab)
- Horizontal dimension: 300 (Width of the concrete slab)
- Material specifications:
  - CONCRETE 25Mpa
  - LOOSE FILL
  - SOFT FILL MATERIAL
- Labels: F.S.L (Finished Surface Level), F.G.L (Finished Ground Level)

### SIDE ELEVATION

[illegible]